



FlexTech Bracket Assembly

SludgeWatch Ultra Transducer

PRODUCT DATASHEET

COMPATIBLE SENSORS

SludgeWatch Ultra Transducer

MATERIALS

Shaft - PVC
Connectors - PVC
Cable Gland - Polyamide
Bracket - Stainless Steel

SIZE

Min 2.0 metres to Max 3.5 metres
2.5, 3.0 and 3.0 metres shafts supplied
in parts
60mm OD

INCLUDES

Mounting Shaft
Handrail Bracket
Quick Release Assembly

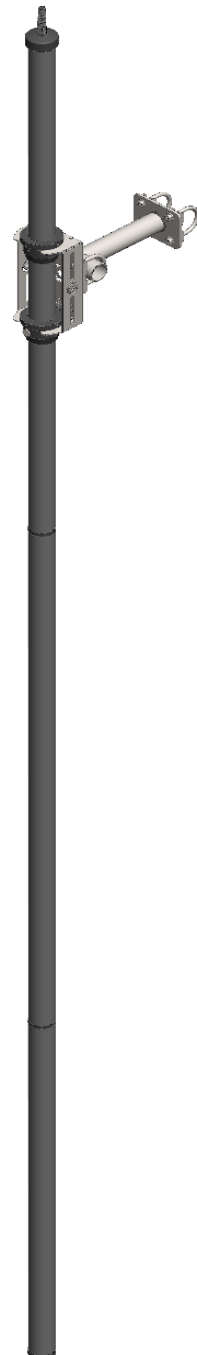
Order Codes

Part No Description

224681	FlexTech Transducer Bracket Assembly (SludgeWatch Ultra, 2.0 metres)
223444	FlexTech Transducer Bracket Assembly (SludgeWatch Ultra, 2.5 metres)
223442	FlexTech Transducer Bracket Assembly (SludgeWatch Ultra, 3.0 metres)
223445	FlexTech Transducer Bracket Assembly (SludgeWatch Ultra, 3.5 metres)

Publication No: 133393DS-Iss02

The company reserves the right to alter the specification without prior notice. E&OE



Assembly PN	Shaft Length
224681	2.0 metres
223444	2.5 metres
223442	3.0 metres
223445	3.5 metres

Notes

- 1) Handrail size - up to 50 mm
- 2) Nominal Handrail Pitch 600 mm
- 3) the transducer should be positioned so that it is always under the water surface, ideally the depth should be 200 mm.

Call us on + 44(0) 1726 879800 www.partech.co.uk



Address: Rockhill Business Park, Higher Bugle, St Austell, Cornwall PL26 8RA, UK E: info@partech.co.uk